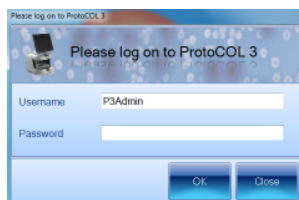


ProtoCOL 3 Total Plate Count Batch Set-Up Quick Guide

1 Start ProtoCOL 3 software

Enter



➔ Log on to ProtoCOL 3

2 Position plate

➔ Insert the plate holder, ensuring the plate holder that gives the best contrast between the zone and background is used

➔ Place plate onto plate holder

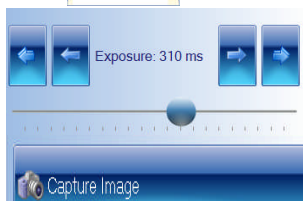
3 Capture image

Click



Slide

Click



➔ Select the image tab and check the live box

➔ Adjust the exposure by increasing/decreasing the sliding scale

➔ Capture image

4 Create batch

Click



➔ Click New Batch

5 Plate configuration

Select



➔ Select Plate Configuration to set plate size and sample volume. Default are circular plate, 90mm, sample volume 1mL. Change if necessary

6 Choose an application

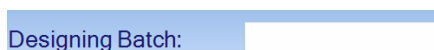
Select



➔ Select Pour Plate

7 Name the batch

Enter



➔ Name the batch

8 Total plate count

Click



Select

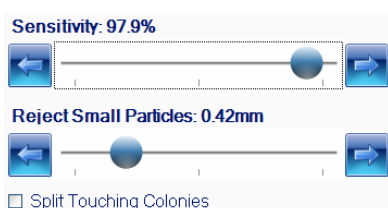
➔ Position counting frame over the colonies to be counted

➔ Click Total Plate Count

➔ Select colony type from the drop-down, either Light or Dark Colonies

9 Classification settings

Slide



Check

➔ Move slider to the left to adjust the detection sensitivity

➔ Move slider to the left to accept small particles or to the right to exclude small particles

➔ If any colonies are touching select the Split function

10 Enter a plate ID

Enter



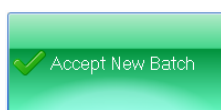
Click



➔ Enter a plate ID found on Measure tab. Auto-increment default is "on", to change this click on the Configuration tab

11 Accept batch

Click



➔ Accept batch

ProtoCOL 3 is now ready to make the first measurement

CONTACT SYNBIOSIS:
EUROPE:
Tel: +44 (0)1223 727125
Email: support@synbiosis.com

USA:
Tel: 800 686 4451/301 662 2863
Email: support@synbiosis.com

www.synbiosis.com
P3TPCBSU1211